



---

# UL 1686

## **STANDARD FOR SAFETY**

### Pin and Sleeve Configurations



UL Standard for Safety for Pin and Sleeve Configurations, UL 1686

Fourth Edition, Dated August 17, 2012

### **Summary of Topics**

***This revision of ANSI/UL 1686 is being issued to update the title page to reflect the reaffirmation of ANSI approval. No changes in requirements have been made.***

Text that has been changed in any manner or impacted by UL's electronic publishing system is marked with a vertical line in the margin.

The requirements are substantially in accordance with Proposal(s) on this subject dated April 27, 2018.

All rights reserved. No part of this publication may be reproduced, stored in a retrieval system, or transmitted in any form by any means, electronic, mechanical photocopying, recording, or otherwise without prior permission of UL.

UL provides this Standard "as is" without warranty of any kind, either expressed or implied, including but not limited to, the implied warranties of merchantability or fitness for any purpose.

In no event will UL be liable for any special, incidental, consequential, indirect or similar damages, including loss of profits, lost savings, loss of data, or any other damages arising out of the use of or the inability to use this Standard, even if UL or an authorized UL representative has been advised of the possibility of such damage. In no event shall UL's liability for any damage ever exceed the price paid for this Standard, regardless of the form of the claim.

Users of the electronic versions of UL's Standards for Safety agree to defend, indemnify, and hold UL harmless from and against any loss, expense, liability, damage, claim, or judgment (including reasonable attorney's fees) resulting from any error or deviation introduced while purchaser is storing an electronic Standard on the purchaser's computer system.

No Text on This Page

**AUGUST 17, 2012**  
(Title Page Reprinted: June 25, 2018)



**ANSI/UL 1686-2014 (R2018)**

**1**

**UL 1686**

**Standard for Pin and Sleeve Configurations**

First Edition – December, 1993

Second Edition – July, 1998

Third Edition – January, 2007

**Fourth Edition**

**August 17, 2012**

This ANSI/UL Standard for Safety consists of the Fourth edition including revisions through June 25, 2018.

The most recent designation of ANSI/UL 1686 as a Reaffirmed American National Standard (ANS) occurred on June 25, 2018. ANSI approval for a standard does not include the Cover Page, Transmittal Pages, and Title Page.

Comments or proposals for revisions on any part of the Standard may be submitted to UL at any time. Proposals should be submitted via a Proposal Request in UL's On-Line Collaborative Standards Development System (CSDS) at <https://csds.ul.com>.

UL's Standards for Safety are copyrighted by UL. Neither a printed nor electronic copy of a Standard should be altered in any way. All of UL's Standards and all copyrights, ownerships, and rights regarding those Standards shall remain the sole and exclusive property of UL.

**COPYRIGHT © 2018 UNDERWRITERS LABORATORIES INC.**

No Text on This Page

## CONTENTS

### INTRODUCTION

1 Scope .....	4
2 General .....	4

### CONFIGURATIONS

C1 Configurations .....	5
C2 Configurations .....	16
C3 Configurations .....	94
C4 Configurations .....	114
C5 Specific Configurations .....	121

## INTRODUCTION

### 1 Scope

1.1 These configurations cover attachment plugs, receptacles, and cord connectors, for use in accordance with the National Electrical Code (NEC), ANSI/NFPA 70.

1.2 These configurations do not cover devices rated at more than 800 A or for more than 600 V.

### 2 General

2.1 The information given in 2.1(a) – 2.1(h) applies to each configuration in Sections C1 – C5.

- a) All dimensions are in inches.
- b) Decimal dimensions without tolerances shall be subject to a  $\pm 0.005$  inch tolerance.
- c) Angular dimensions without tolerances shall be subject to a  $\pm 1/2$  degree tolerance.
- d) Where two values are given for the same dimension, the larger is the maximum value and the smaller the minimum value.
- e) Leading edges of pins and sleeves shall be free of burrs and sharp edges.
- f) A contour, face dimension, yoke construction, or mounting ears and dimensions for any receptacle construction that is shown depicts an acceptable construction; other constructions may also be acceptable if tested and found to be equivalent.
- g) The relationship of recessing of contacts, or internal construction in a receptacle that is shown depicts an acceptable construction; other constructions may also be acceptable if tested and found to be equivalent.
- h) Terminal identification shall comply with the following:
  - 1) The grounded terminal is to be identified in the Figures by the letter "W".
  - 2) The grounding terminal is to be identified in the Figures by the letter "G".



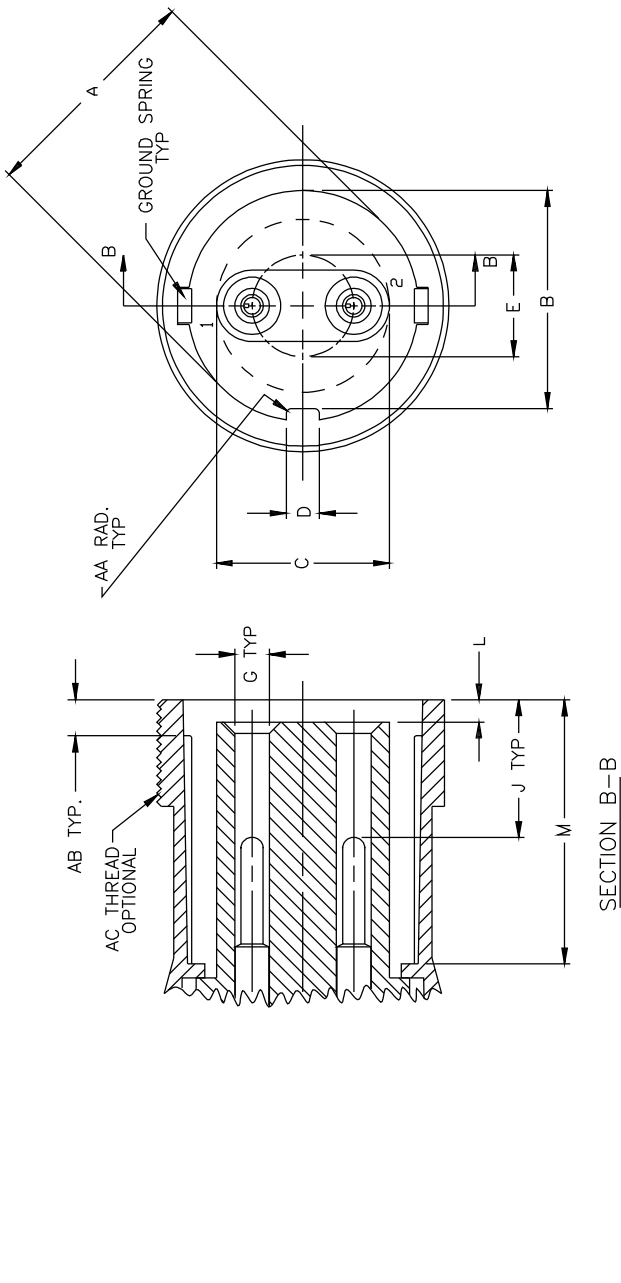
## CONFIGURATIONS

### C1 Configurations

#### NOTES

1. Q is the allowable distance measured from the male contact tip to a plane perpendicular to the longitudinal axis where initial electrical engagement with the sleeve contact takes place.
2. The design of the pins shall provide a means of maintaining electrical contact force to their respective sleeve contacts.
3. The design of the ground springs shall provide a means of maintaining electrical contact with the plug sleeve when the plug is mated with the receptacle.
4. Connectors shall be rated for use in ordinary locations only.
5. Receptacles may be rated for use in Hazardous Locations.
6. Plugs shall be rated for use in Hazardous Locations.
7. Inlets shall be rated for use in ordinary locations only.

Figure C1.1  
Receptacle and connectors



STYLE	TYPE	AMP RATING	A (ϕ)	B	C (ϕ)	D	E (ϕ)	G (ϕ)	J	L	M	Q	AA	AB	AC
1	2P	30	1.929 1.865 1.750	1.818 1.750 1.640	1.440 1.145 1.145	1.98 1.48 1.38	.568 .557 .557	.266 .258 .258	1.115 1.005 1.005	.275 .225 .225	1.734 MIN	.120 .080 .080	.104 .026 .026	.750 .250 .250	2 9/16-14 UNS-2B
1	2P	60	2.359 2.240 2.116	2.219 2.160 2.073	1.600 1.515 1.515	.385 .314 .302	.855 .830 .830	.392 .381 .381	1.609 1.465 1.465	.359 .214 .214	2.891 MIN	.140 .100 .100	.130 .045 .045	1.500 .250 .250	2 15/16-14 UNS-2B
1	2P	100	2.496 2.431 2.358	2.421 2.358 2.273	1.673 1.573 1.573	.362 .302 .302	1.035 1.025 1.025	.447 .437 .437	1.907 1.807 1.807	.300 .205 .205	3.547 MIN	.135 .125 .125	.039 .039 .039	1.200 .250 .250	3 3/16-14 UNS-2B

SM802  
F, H, I, K, N-P, R-Z NOT USED

See note 1, 2, 3, 4 and 5.